



THE GREAT LAKES SEAWAY
PARTNERSHIP

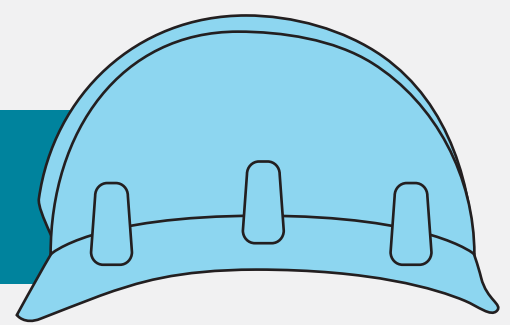
ECONOMIC IMPACT

GREAT LAKES SEAWAY SHIPPING

STATE OF MINNESOTA

JOBS CREATED

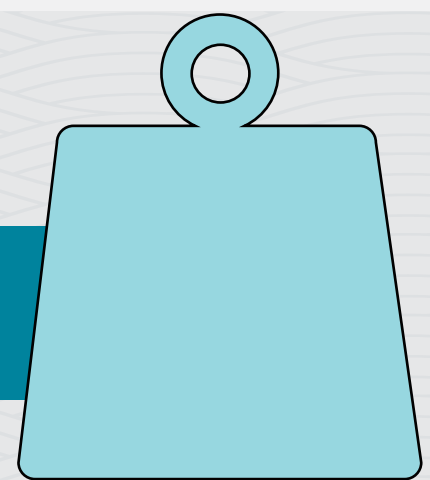
6,161



CARGO HANDLED

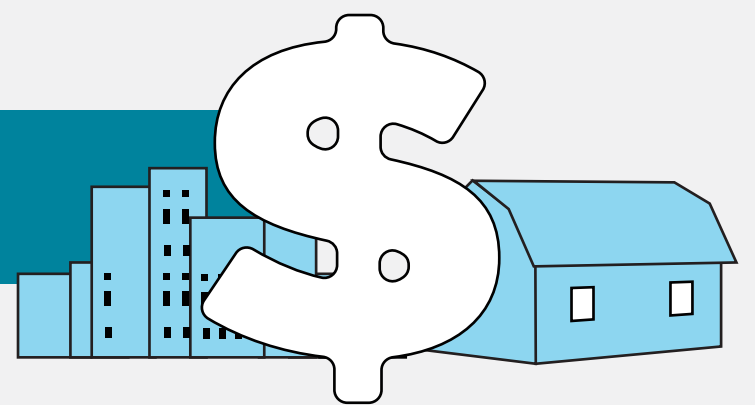
31.2 MILLION

IN METRIC TONS



ECONOMIC ACTIVITY

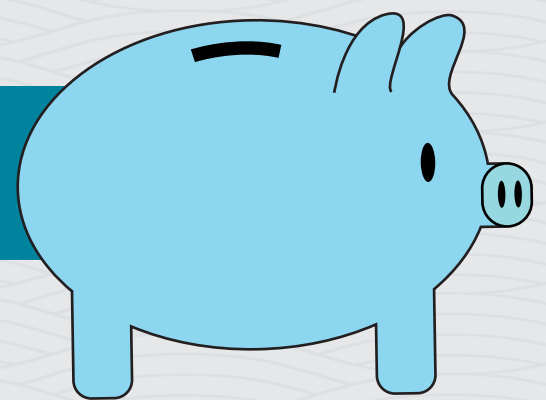
\$1.4 BILLION



INCOME GENERATED

\$413 MILLION

IN TOTAL PERSONAL INCOME &
LOCAL CONSUMPTION EXPENDITURES



TAX REVENUE GENERATED

\$230 MILLION

IN FEDERAL, STATE & LOCAL TAX REVENUE



LEARN MORE GREATLAKESSEAWAY.ORG

\$ = USD. SOURCE: MARTIN ASSOCIATES, ECONOMIC IMPACTS OF MARITIME SHIPPING IN THE GREAT LAKES-ST. LAWRENCE REGION, CHAPTER II GREAT LAKES-ST. LAWRENCE SEAWAY SYSTEM IMPACTS, EXHIBIT II-10.