



THE GREAT LAKES SEAWAY
PARTNERSHIP

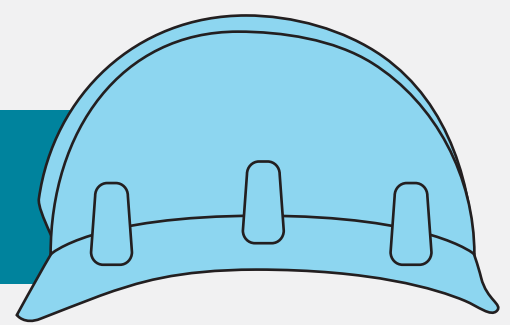
ECONOMIC IMPACT

GREAT LAKES SEAWAY SHIPPING

STATE OF ILLINOIS

JOBS CREATED

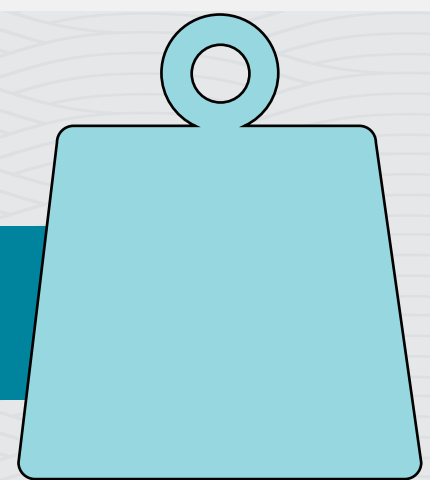
6,476



CARGO HANDLED

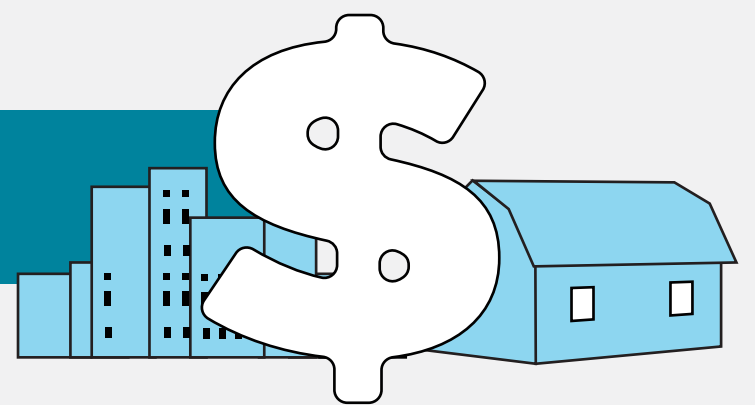
10.2 MILLION

IN METRIC TONS



ECONOMIC ACTIVITY

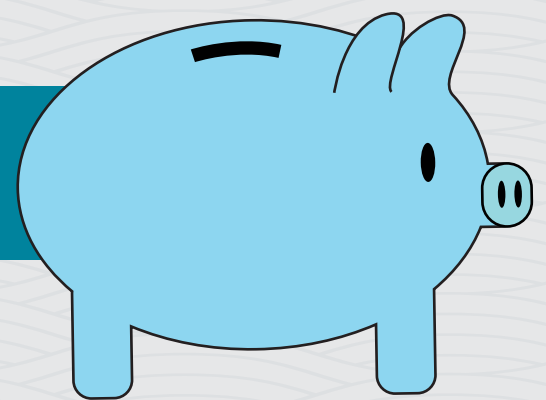
\$830.9 MILLION



INCOME GENERATED

\$521.9 MILLION

IN TOTAL PERSONAL INCOME &
LOCAL CONSUMPTION EXPENDITURES



TAX REVENUE GENERATED

\$202.7 MILLION

IN FEDERAL, STATE & LOCAL TAX REVENUE



LEARN MORE GREATLAKESSEAWAY.ORG

\$ = USD. SOURCE: MARTIN ASSOCIATES, ECONOMIC IMPACTS OF MARITIME SHIPPING IN THE GREAT LAKES-ST. LAWRENCE REGION, CHAPTER II GREAT LAKES-ST. LAWRENCE SEAWAY SYSTEM IMPACTS, EXHIBIT II-10.